



# UNITED ENGINEERING CONSULTANTS, INC.

- Building Condition Surveys
- Contract Administration
- Corrosion Control Design
- Structural Inspection & Design
- Project Planning & Management

## FIELD OBSERVATION REPORT PERMIT # BLDC-000287-2020

		Report No. 47	Page 1 of 1
Project:	Southpoint Condominium	Inspection For:	Restoration Project
Day/Date:	Monday, October 12, 2020	Job No.	19-1086
Location:	4453 S. Atlantic Ave, Ponce Inlet	Engineer:	Timothy J. Snook, P.E.
Contractor:	ACE Enterprises, LLC	Project Foreman:	Wes Swaim
Subcontractor:	Gulfstream Glass (3)	Inspector:	Timothy J. Snook, P.E.
Weather:	88 Degrees @ 1:15 P.M.	Sunny	Light Breeze 10% Chance of Rain
Workforce Total:	12		
Activities:	Concrete repair, Window trim installation, stucco, pressure washing		

### Observation Report:

The Engineer was on-site to inspect the completed repair at Unit 208 window sill (See Photo 1). The excavation conformed to ICRI standards. The reinforcing steel was cleaned and no supplemental steel was needed. The excavation was approved to be cast.

Concrete demolition continues in the garage under the building (See Photo 2). The Engineer provided direction for a full depth walkway slab repair (See Photos 3-4).

Gulfstream is installing break metal trim on the interior of installed windows.

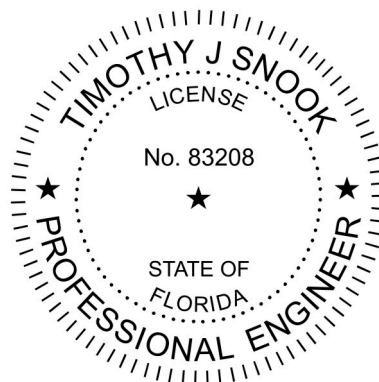
The walkways are being pressure washing in-preparation for paint.

Painting the 10/11 stack window drop is in-progress.

Stucco application is in-progress in the garage.

**UNITED ENGINEERING CONSULTANTS**

Timothy J. Snook, P.E.  
Florida License No. 83208



This item has been electronically signed and sealed by Timothy J. Snook using a Digital Signature and date. Printed Copies of this Document are not considered signed and sealed and the SHA authentication code must be verified on any electronic copies.



Picture 1: Unit 208 window sill repair

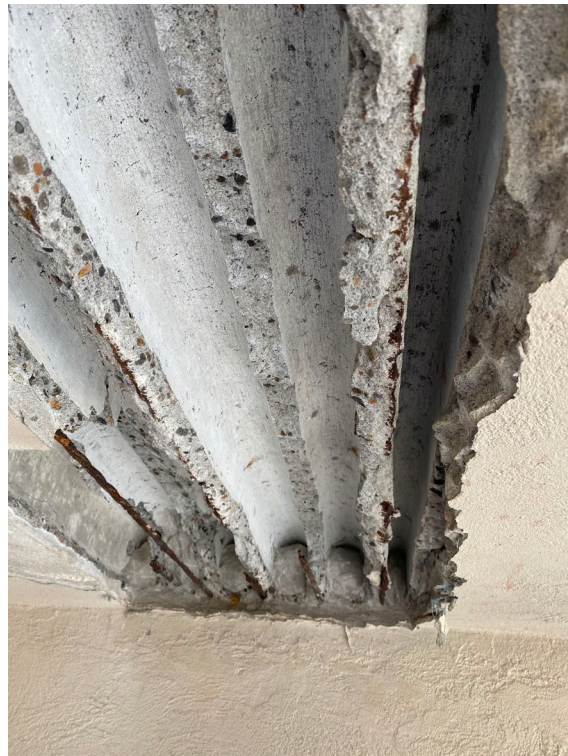


Picture 2: In-progress concrete repairs





Picture 3: In-progress slab repair below 1<sup>st</sup> floor walkway



Picture 4: Close up of broken steel cables in walkway repair